

### 3 Teloepa Crescent Tura Beach NSW

4  2  4 

Set on a generous 1115m<sup>2</sup> block and tucked away in a quiet, private position backing straight onto the golf course, this solid brick and tile home offers space, privacy and a relaxed Tura Beach lifestyle.

Upstairs is where the main living happens, with separate lounge and dining areas that open out to the deck - a great spot to sit back, enjoy the outlook and watch the golfers go by. The kitchen sits in the heart of the home, with three bedrooms on this level including the main with ensuite, plus a second bathroom for family or guests.

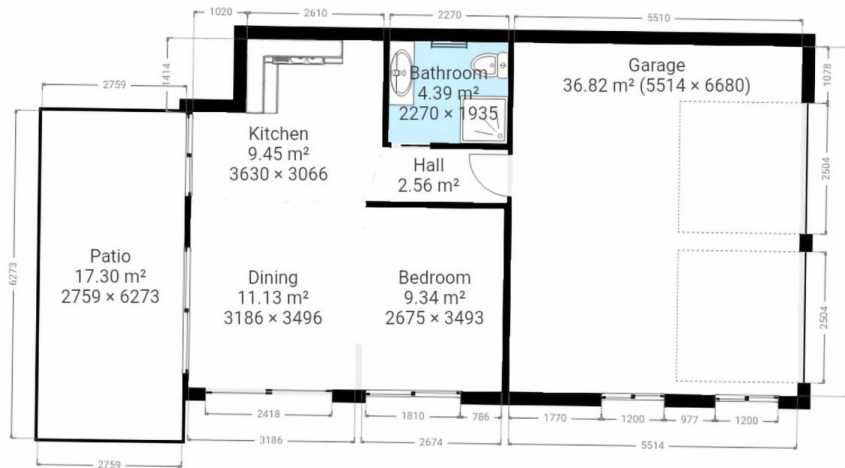
Downstairs has its own private setup with a bedroom, bathroom and kitchenette, making it perfect for teenagers, extended family or visitors wanting their own space.

[For full version visit the website](https://www.butterfieldproperty.com.au)

**Type** : House  
**Price** : \$1,099,000  
**Land Size** : 1115 sqm  
**View** : <https://www.butterfieldproperty.com.au/sale/nsw/far-south-coast/tura-beach/residential/house/8620790>

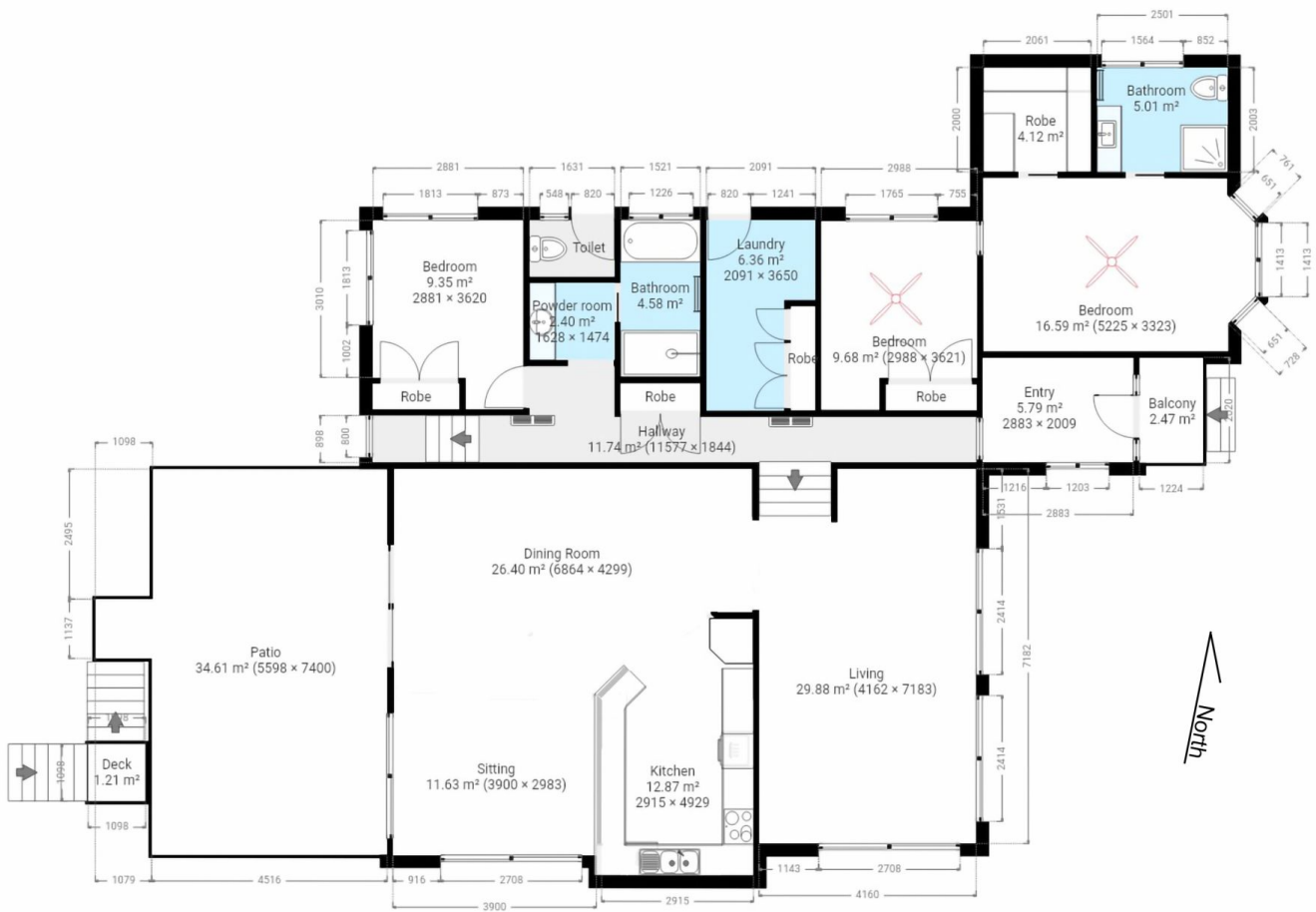


**Roy Van Casteren**  
02 6492 5155



This plan is intended for marketing purposes only. All dimensions are approximate.

### 3 Telopia Crescent Tura Beach



This plan is intended for marketing purposes only. All dimensions are approximate.

### 3 Telopia Crescent Tura Beach